



# GM BLANK DIE SYSTEM

## Individual Components or Complete Die Sets Available

### Product features:

- ◆ **Die Sets** manufactured to customer prints, utilizing ball bearing components to fully meet GM NAO Die Standards for blank dies.
- ◆ **Guide posts** manufactured from through-hardened 52100 tool steel to assure exceptional wear resistance and free rolling of balls. Slotted pins are utilized in this design.
- ◆ **Cages** are manufactured from an aluminum alloy which provides tough wear resistant qualities. The ball bearings are vacuum degassed quality, fatigue resistant steel and are inspected to ensure roundness, smoothness and dimensional conformance. The ball bearings are arranged in the cage in a spiral pattern to reduce tracking or grooving and assure uniform wear. Ball cages rotate around the guide posts when not under pre-load, thus reducing tracking of the guide post surface.
- ◆ **Bushings** are manufactured from 52100 tool steel, through-hardened and precision machined. The inside diameter is ground and honed to an excellent surface finish to minimize resistance so that retainer bearings roll freely.

**Fully meets GM NAO Die Standards for blank dies**

**Contact us today for information about this or any of our complete line of products!**

6779 Engle Road Suite A - F  
Cleveland, OH 44130-7926



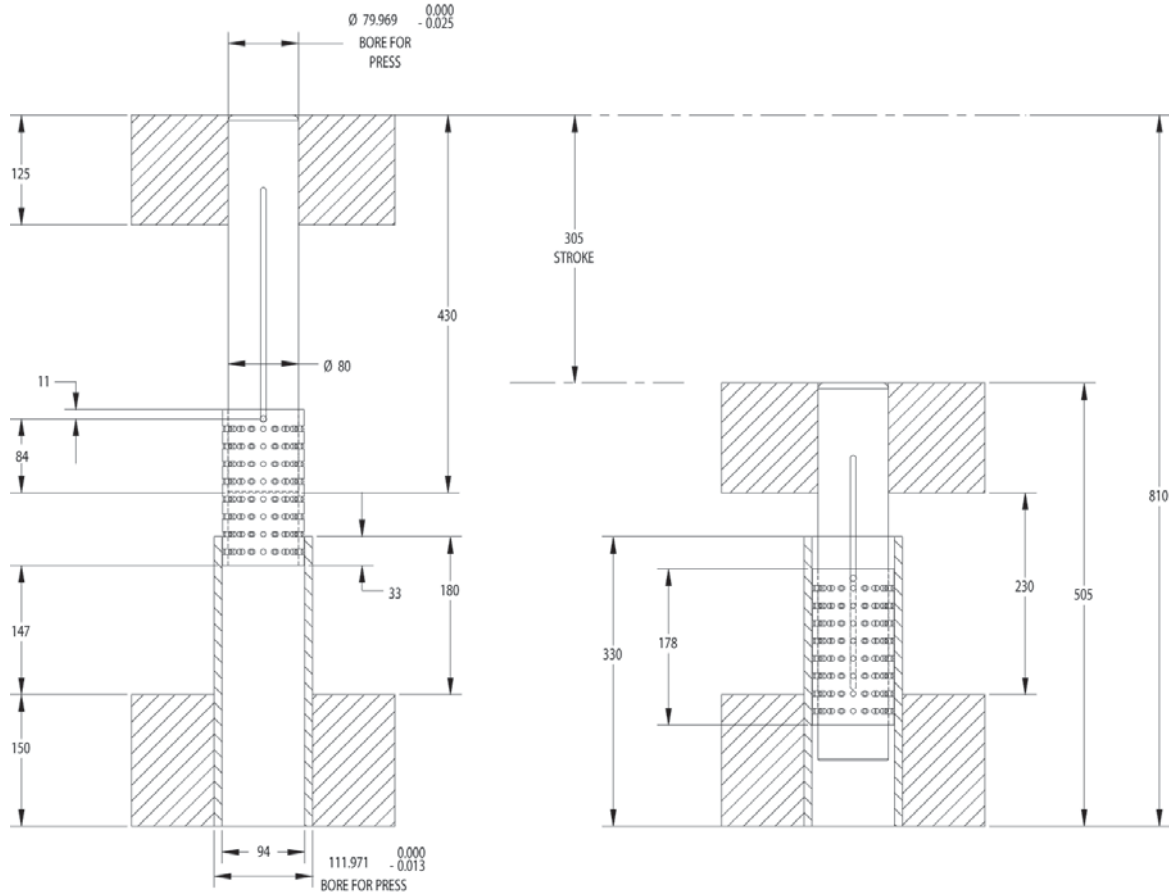
**E-MAIL: [danlyinfo@danly.com](mailto:danlyinfo@danly.com)**

**TOLL FREE: 800.243.2659**  
**FAX: 800.833.2659**

**VISIT US AT [www.danly.com](http://www.danly.com)**

## Ordering Information

### Overall die open & shut dimensions



**NOTE:** All dimensions are in millimeters.

Item Description	Part Number
Sleeve bushing:	967-80330
Press fit guide post:	957-80430
Ball cage:	367-80178

**Other die set components  
are available  
to meet your specific requirements.**

**VISIT US AT  
[www.danly.com](http://www.danly.com)**